

**sun** ChongQing Sunkingdom Medical Instrument Co., Ltd.  
Kingdom

Head office: Room 12, Floor 10, Block A of China Resource Center,  
Jiulongpo District, Chongqing 400050, China.  
Tel: +86 23 68643990  
FAX: +86 23 68102793  
E-mail: sales@cqsunkingdom.com  
URL: en.cqsunkingdom.com

# *SLIT LAMP SERIES*

Ophthalmic Slit Lamp Microscope  
Diagnostic Unit / Digital Unit

# LS-7 SLIT LAMP

## EXCELLENT OPTICAL PERFORMANCE

Excellent optical performance

1.4 times resolution better than traditional one

Details like anterior chamber flare and corneal endothelial cells can also be displayed in the extreme

## PROFESSIONAL LIGHT SOURCE SYSTEM DESIGN

### Warm LED Light Source

The most suitable warm yellow light source to ensure excellent color reproduction  
LED can work for up to 20,000 hours, without replacement within 10 years

### PWM Brightness Control

Use PWM to control the brightness of light source  
Keep the color of light always stable no matter the degree of brightness

### Continuous Illumination Control

A button for continuously controlling illumination on the base  
Easier to operate

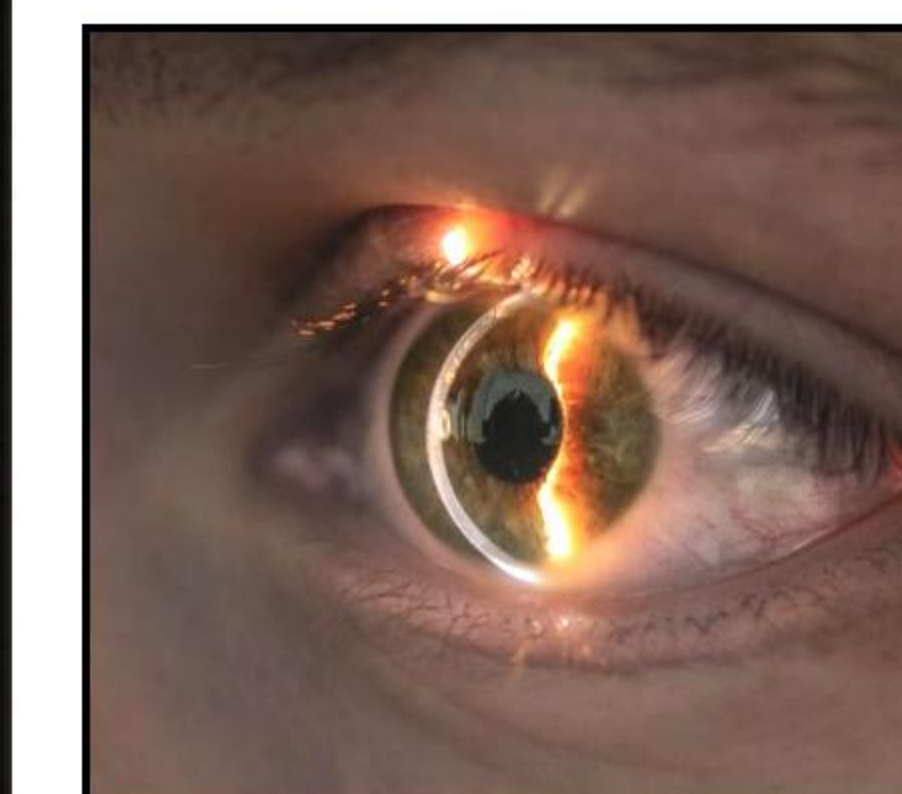
### Filtering Infrared and Ultraviolet Light

Filtering infrared and ultraviolet light through optical lens  
Reduce damage to eyes of examiners and examinees

## FINE MECHANICAL DESIGN

Flexible Joystick

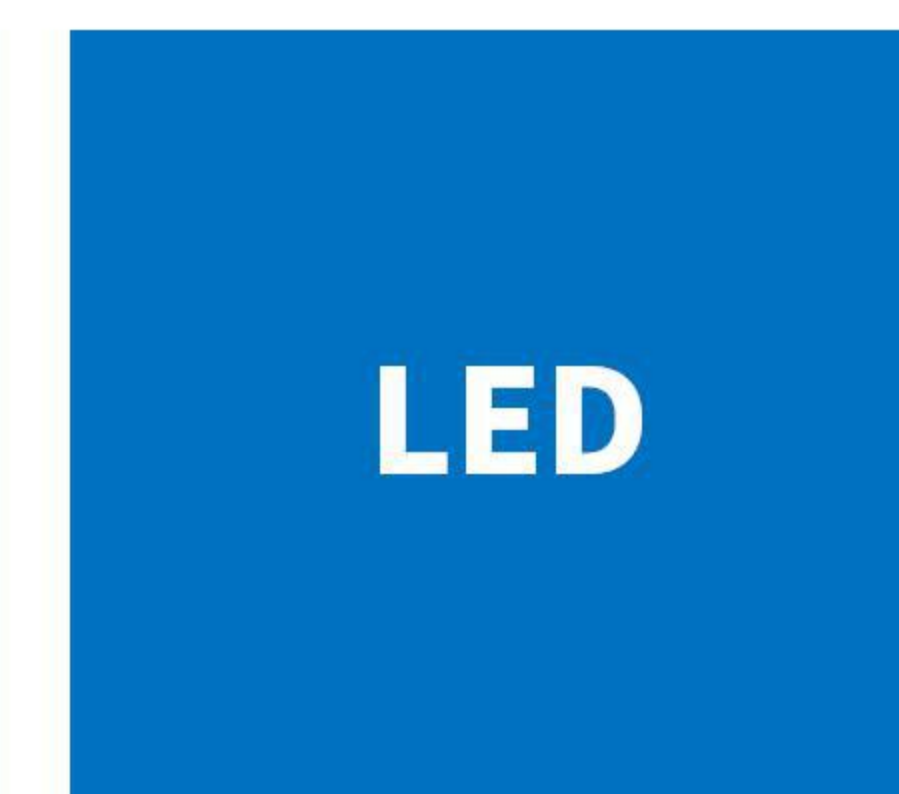
With unique separated design  
Effectively counteract reaction force when sliding



HD



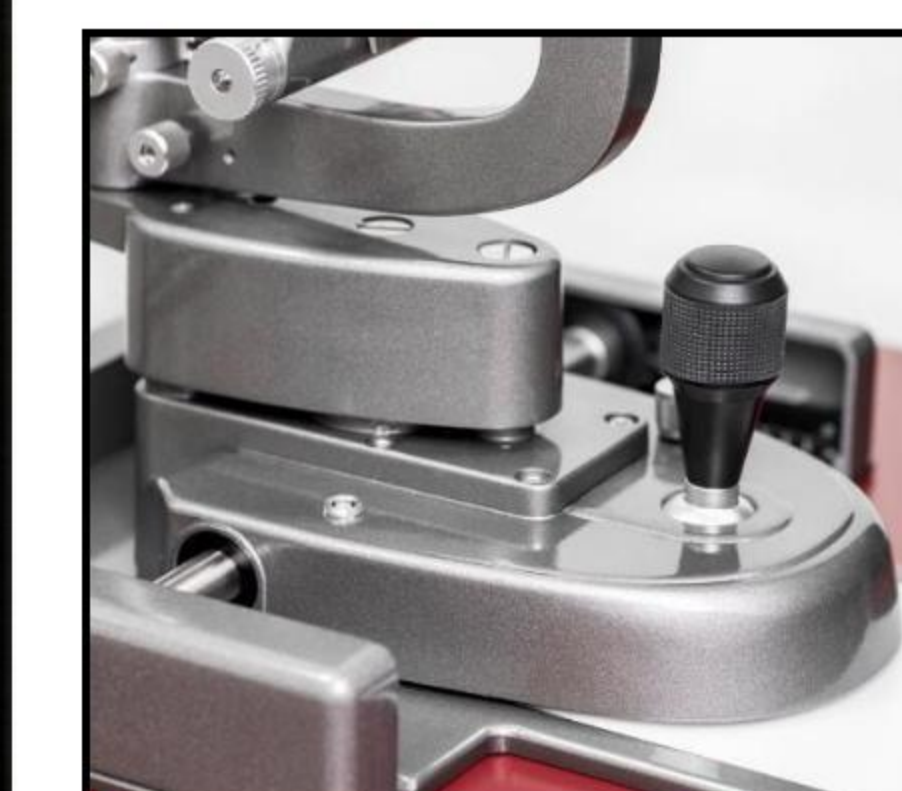
PMW



LED



SOFT





LS-7DE

LS-7DS

Image Capture Software  
 Design for Slit Lamp Camera User  
 Adaptive Parameters  
 Abundant Functions

With special designed  
 beam splitter

## 100% BEAM SPLITTER

※ Only for LS-7DE

Eyepiece observation: 100% beam splitter  
 1.7 times resolution better than  
 traditional 4/6 beam splitter  
 Photo capture: 100% beam splitter  
 2.5 times performance of image captured  
 better than traditional 4/6 beam splitter

## FRONT DIAPHRAGM

### 5-Step Diaphragms

5 Different aperture sizes  
 Can effectively expand the depth of field

### Preliminary Design

With the design of front aperture of light  
 path  
 Consistency between eyepiece and screen

# LS-7DS/LS-7DE DIGITAL SLIT LAMP

## ULTIMATE EXPERIENCE OF OBSERVATION AND PHOTOGRAPHING

Perfect combination of high performance and premium experience  
 Wise choice for the world's top experts, laboratories and scientific research

## LIGHT COMPENSATION SYSTEM DESIGN

※ Only for LS-7DE

### Confocal Flash Compensation

Observation light source and flash compensation light source adopt the same  
 optical path design, imaging on the same observation focal plane together  
 Can use a very weak light source to carefully check focus  
 Light compensation is provided to obtain high-quality images  
 Comfort of the examinee is greatly improved

### Flash Independent + Coaxial Background Light

Realize panoramic observation before taking photos  
 Provide independent angle and bright supplementary light source for taking  
 photos  
 More comfortable and easier to cooperate

## UPGRADED OPTICAL

Better optical effect  
1.15 times optical transparency better than  
traditional one

## CONVERGING EYEPIECE

With angle of  $6^\circ$   
Better convergence and fusion effect of binocular  
image  
Improve the comfort of long-time use of slit lamp  
extremely suitable for medical clinics and  
optometrist

## FILTER INFRARED

## FILTER ULTRAVIOLET

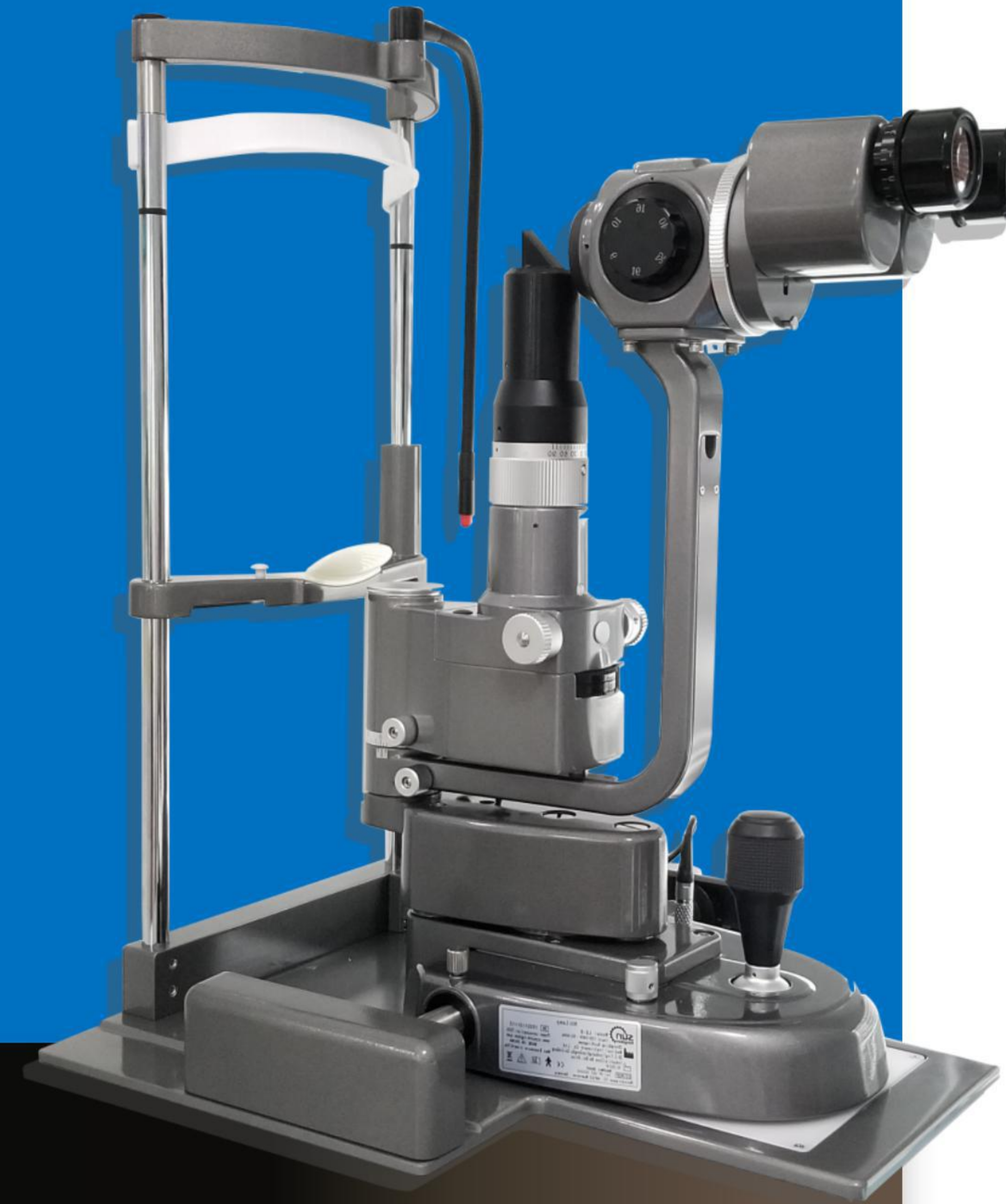
Filtering infrared and ultraviolet light through  
optical lens  
to reduce damage to eyes

## LIGHT SOURCE SYSTEM

Warm LED light source, suitable for observation  
of eye tissue  
can work for up to 20,000 hours  
Use PWM to ensure the brightness of light source  
stable all the time  
Continuous illumination control to make it more  
convenient to operate, brightness can be  
adjusted as needed



LS-9 SLIT LAMP



LS-8  
SLIT LAMP

## UPGRADED OPTICAL

Better optical effect  
1.15 times optical transparency better than  
traditional one

## CONVERGING EYEPIECE

With angle of  $6^\circ$   
Better convergence and fusion effect of binocular  
image  
Improve the comfort of long-time use of slit lamp  
Extremely suitable for medical clinics and  
optometrist

## DELICATE VOLUME

Zeiss type with small size

## LIGHT SOURCE SYSTEM

Warm LED light source, suitable for observation of  
eye tissue, can work for up to 20,000 hours  
Use PWM to ensure the brightness of light source  
stable all the time  
Continuous illumination control to make it more  
convenient to operate, brightness can be adjusted  
as needed



## LS-3/4 SLIT LAMP

### PARALLEL TYPE, GALILEAN SYSTEM

Stereoscopic binocular fusion  
Can upgrade to teaching slit lamp and digital slit lamp

### MAGNIFICATION CHANGER: REVOLVING DRUM

LS-3: 10x, 16x, 25X, 3-step magnification  
LS-4: 6x, 10x, 16x, 25X, 40X, 5-step magnification

### LIGHT SOURCE SYSTEM UPGRADE

Warm LED light source, suitable for eye tissue for 20,000 hours  
Use PWM to ensure the brightness of light source stable  
Continuous illumination control makes it more convenient to operate

## LS-5 DIGITAL SLIT LAMP



### ADAPTIVE PARAMETERS

One key shooting can easily obtain high-quality image  
without heavy training of exposure, ISO, shutter speed and other parameters

### MANAGEMENT SOFTWARE

More clear and direct to manage patients' information  
One key export is supported, making it easier to transfer data

### DATA SHARING

With abundant image processing functions to meet various clinical needs  
DICOM, HIS/PACS is supported

# ***OPTIONAL***



## **YELLOW FILTER I . MODE**

Special Coating Technology  
Excellent Dyeing Effect  
For LS-7 / 7DS / 7DE



## **YELLOW FILTER II . MODE**

Special Coating Technology  
Excellent Dyeing Effect  
For LS-3 / 4 / 5



## **STEREO VARIATOR**

For Fundus Observation  
Binocular Observation Angle from 13° to 4.5°  
Twice stereoscopic field Increased  
Maintaining depth information  
For LS-7

# ***SPECIFICATION***

ITEM	LS-3	LS-4	LS-5	LS-8	LS-9	LS-7	LS-7DS	LS-7DE
Microscope Type	Galilean Dystem							
Magnification Changer	Revolving Drum							
Eyepiece Magnification	12.5X							
Slit Width	0mm~14mm Continuously Adjustable							
Slit Length	1mm~14mm Continuously Adjustable							
Slit Angle	0~180°Continuously Adjustable							
Filter	Heat Aborption, Grey, Redfree (Green), Cobalt Blue							
Light Control	PWM: Pulse Width Modulation							
Light Source	Warm LED							
Optical Effect	Basic Series			Upgrade Series			Ultimate Series	
Magnification	10X, 16X, 25X	6X, 10X, 16X, 25X, 40X		6.25X, 10X, 16X, 25X, 40X			6.3X, 10X, 16X, 25X, 40X	
Diopter	±7D			±8D			±7D	
Pupil Range	52mm-85mm			45mm-82mm			48mm-78mm	
Visual Field Diameter	6X:33mm; 10X:22mm; 16X:14mm; 25X:8.5mm; 40X:5.5mm			6.25X:33mm; 10X:22mm; 16X:14mm; 25X:8.6mm; 40X:5.6mm			6.3X:31mm; 10X:22mm; 16X:14mm; 25X:8.5mm; 40X:5.5mm	
Illumination Type	Haag-Streit Type			Zeiss type		Haag-Streit Type		
Illumination Tilting	5°,10°,15°,20°			/		5°,10°,15°,20°		
Slit Aperture Size	φ 0.2, φ 1, φ 3, φ 5, φ 10, φ 14 (mm)			φ 0.2, φ 1, φ 2, φ 5, φ 10, φ 14 (mm)				
Filter	None			Filter Infrared, Filter Ultraviolet				
Handle Operation	None			Slider Flexible Design				
Aperture Position	/	/	None	/	/	/	Beam Splitter Design	
Eyepiece Luminous Rate	/	/	60%	/	/	/	60%	100%
Camera Luminous Rate	/	/	40%	/	/	/	40%	100%
Flash System	/	/	None	/	/	/	None	Synchronous Flash System
Background Illumination	/	/	Co-Axial	/	/	/	Co-Axial	Co-Axial + Independent